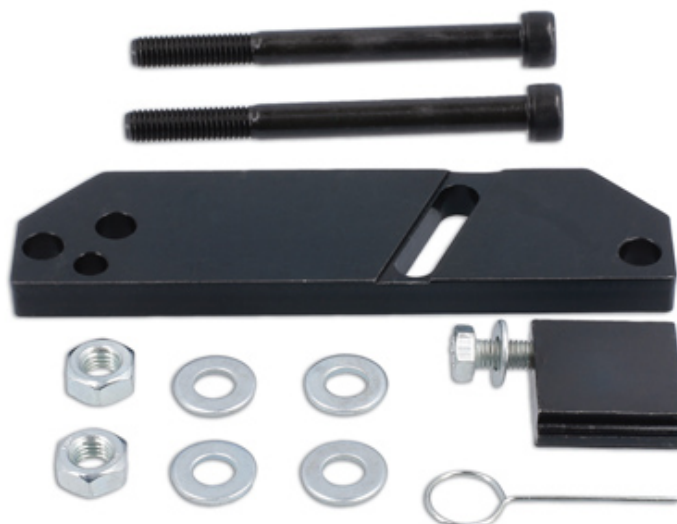


## Flywheel Locking Tool - for Mercedes-Benz, Renault

Developed specifically to bolt in place of the starter motor on the 0.9, 1.3 and 1.6L petrol engines found in the Mercedes-Benz and Renault ranges. Designed to lock the flywheel to allow easy removal of the crankshaft pulley and flywheel bolts.



### Additional Information

- Applications include: Mercedes-Benz A-Class (from 2018); B-Class, CLA, GLA, GLB (from 2019). Renault Arkan and Clio V (from 2019); Captur, Kadjar, Megane IV, Scenic and Talisman (from 2018).
- Dacia applications include: Dokker (2015 - 2019), Duster (from 2017), Lodgy (2015 - 2019), Logan (from 2013) and Sandero (From 2013).
- Equivalent to OEM MOT.2188 - use in accordance with OEM instructions.
- For engine timing on 1.3L Mercedes-Benz and Renault engine applications, use with Laser engine timing kit, Part No. 8148.
- Made in Sheffield.

<http://lasertools.co.uk/product/8144>

